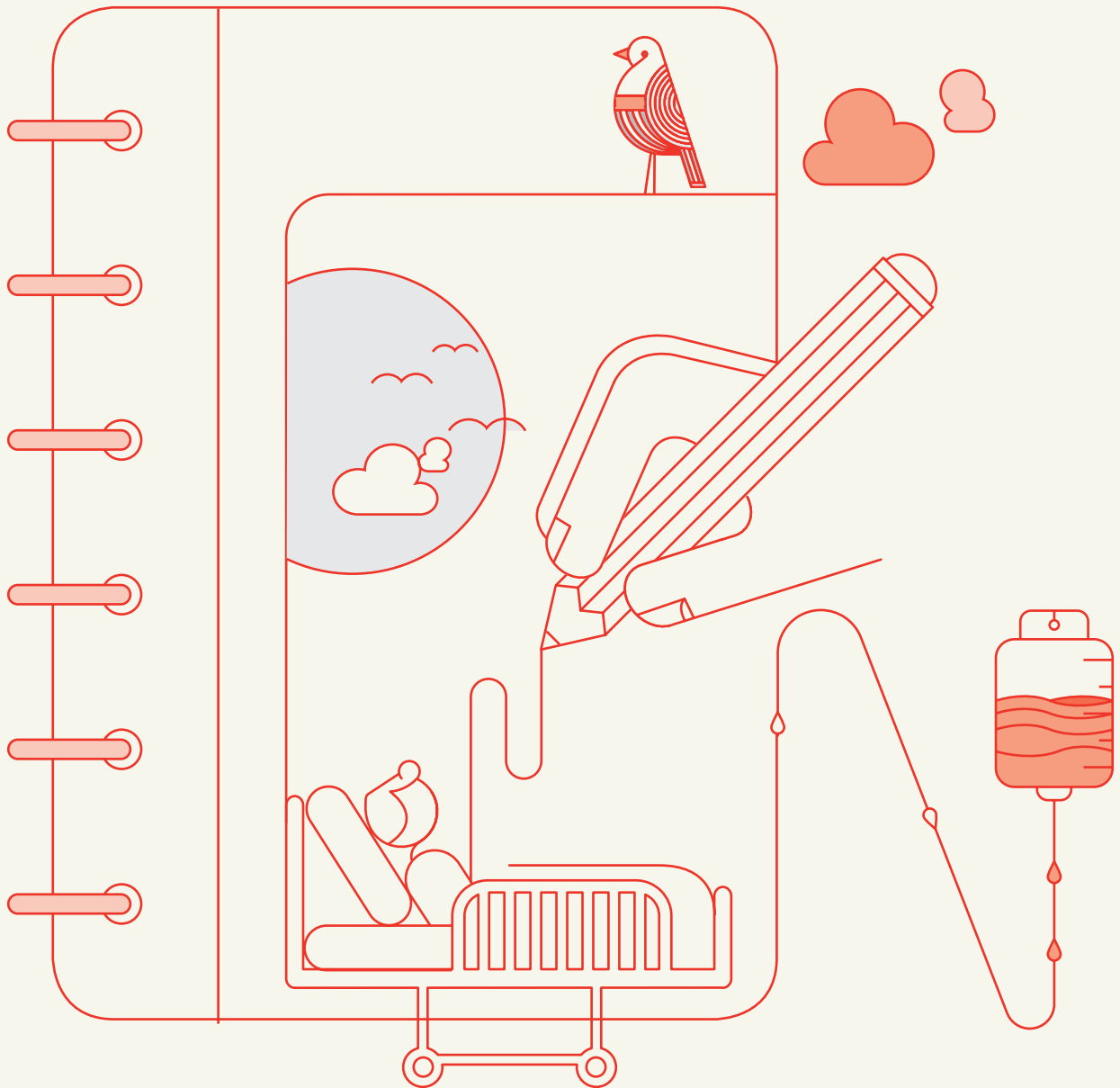




# Private Patients Pricelist

1 January 2021 – 31 December 2021

---



## Diagnostic Services

SANBS-BHF Codes	Descriptions	Price Excl. VAT	Price Incl. VAT
10580	Packaging	R 87,22	R 100,30
15016	Low Ionic Reagent 15ml	R 174,97	R 201,22
78004	Whole Blood Reagent	R 1 002,55	R 1 152,93
78012	Buffy Coats	R 501,29	R 576,48
78015	Anti-Human Globulin Polyspecific 15ml	R 344,76	R 396,48
78018	Group A1 15ml	R 203,72	R 234,28
78019	Group A2 15ml	R 203,71	R 234,27
78020	Group B 15ml	R 203,71	R 234,27
78461	Anti-D saline Tube & Slide Monoclonal 5ml	R 151,84	R 174,62
78467	Anti-D IgM+IgG blend Monoclonal 5ml	R 159,14	R 183,01
78482	Lyoph. Bromelin Tube & Microwell 5ml	R 78,28	R 90,03
78484	Antibody Positive Control Serum 5ml	R 83,86	R 96,44
78487	AB Serum 20ml	R 343,93	R 395,52
78510	Pooled Screen Cells - 5ml	R 105,08	R 120,84
78518	Panel Cell Set 9 x 5ml	R 1 401,24	R 1 611,43
78519	Group O Rh Positive (R1 R2) 15ml	R 226,47	R 260,44
78521	Group O R 15ml	R 226,47	R 260,44
78522	Group O Screen 1 Cells 15ml	R 286,95	R 329,99
78523	Group O Screen 2 Cells 15ml	R 260,44	R 329,99
78524	Panel Cell Set 9 x 15ml	R 1 988,82	R 2 287,15
78525	Sensitized Cells 15ml	R 285,15	R 327,93
78529	Anti-A Monoclonal 15ml	R 255,85	R 294,23
78530	Anti-B Monoclonal 15ml	R 255,85	R 294,23
78531	Anti A,B Monoclonal 15ml	R 256,49	R 294,96
78536	Screening Cells Pooled	R 256,49	R 294,96

## NBI

SANBS-BHF Codes	Descriptions	Price Excl. VAT	Price Incl. VAT
78537	Basic Carbl Fuchsin	R 1 051,72	R 1 209,48
78538	Crystal Violet	R 966,59	R 1 111,58
78539	Grams Iodine	R 1 027,47	R 1 181,59

## Blood and Platelet Productions

### Red Cells

SANBS-BHF Codes	Nappi Codes	Descriptions	Price Excl. VAT	Price Incl. VAT
78040	708800-001	Red Cell Concentrate	R 2 319,41	R 2 667,32
78051	708802-001	Red Cell Conc. Leucocyte Depleted	R 3 789,91	R 4 358,39
78043	708803-001	Red Cell Conc. Paed. Leucodepleted	R 2 144,45	R 2 466,11

### Platelets

SANBS-BHF Codes	Nappi Codes	Descriptions	Price Excl. VAT	Price Incl. VAT
78124	708804-001	Platelet Conc. Single Donor Apherisis	R 12 119,65	R 13 937,60
78125	708805-001	Platelet Conc. Leucocyte Depleted, Pooled	R 10 808,13	R 12 429,34
78127	708808-001	Platelet Concentrate (Paediatric)	R 2 949,20	R 3 391,58
78122	708806-001	Platelet Concentrate Pooled	R 9 772,20	R 11 238,04

### Whole Blood

SANBS-BHF Codes	Nappi Codes	Descriptions	Price Excl. VAT	Price Incl. VAT
78001	708807-001	Whole Blood	R 2 568,73	R 2 954,04
78059	708809-001	Whole Blood Leucocyte Depleted	R 4 039,11	R 4 644,98
78011	708810-001	Whole Blood Paediatric	R 2 144,45	R 2 466,12

### Plasma

SANBS-BHF Codes	Nappi Codes	Descriptions	Price Excl. VAT	Price Incl. VAT
78103	708811-001	Cryoprecipitate (Fibrinogen Rich)	R 1 310,97	R 1 507,62
78174	708812-001	Frozen Plasma - Cryo Poor Donor Retested	R 1 4397,11	R 1 721,68
78179	716662-001	Fresh Frozen Plasma - Donor Retested (Paediatric)	R 925,46	R 1 064,28
78176	708813-001	Fresh Frozen Plasma - Donor Retested	R 1 801,59	R 2 071,83

### Blood and Administration Sets

SANBS-BHF Codes	Nappi Codes	Descriptions	Price Excl. VAT	Price Incl. VAT
78199	440415-002	Blood Filters: 1 Unit	R 1 090,93	R 1 254,57
78200	406059-001	Blood Filters: 2 Units	R 2 091,53	R 2 405,26
78197	628761-001	Platelet Filter 3 - 6 Unit PL2VAE	R 2 019,48	R 2 322,41
78201	470471-001	Set, Blood and Plasma Recipient Set	R 42,14	R 48,46
78202	470474-001	Set, Platelet Recipient	R 109,70	R 126,16
78609		Cryopreservation Bag	R 630,90	R 725,54

## Blood and Platelet Productions (continued)

### Additional Services and Surcharges

SANBS-BHF Codes	Descriptions	Price Excl. VAT	Price Incl. VAT
78050	Irradiation Fee	R 483,11	R 555,57
10210	Transfusion Crossmatch	R 1 032,08	R 1 186,89
10333	Type and Screen	R 448,66	R 515,96
78400	Routine Collection Fee	R 204,32	R 234,97
78401	Routine Delivery Fee	R 204,30	R 234,95
78402	Emergency Round Trip	R 1 390,53	R 1 599,11
78403	Emergency One Way Fee	R 973,38	R 1 119,39
78989	Telephone Consultation 18-0130	R 287,12	R 330,19
78177	FFP Autologous/Directed Fee	R 203,50	R 234,03
78049	Directed Donation	R 248,43	R 285,70
78406	After Hours	R 521,46	R 599,68
78408	Autologous/Directed WB	R 256,89	R 295,42
78407	Autologous/Directed RCC	R 231,90	R 266,69
78409	Blood Return Basis	R 206,62	R 237,62
78410	Emergency Cross-Match	R 157,35	R 180,95
78412	HLA Match	R 1 515,03	R 1 742,28
78413	Rare Donation	R 1 780,59	R 2 047,67
78415	Washed RCC/WB	R 1 483,78	R 1 706,35
78414	Offsite Charge	R 2 090,95	R 2 404,59
78417	Emergency Blood Surcharge	R 231,93	R 266,72

## Pathology Services

SANBS-BHF Codes	Nappi Codes	Descriptions	Price Excl. VAT	Price Incl. VAT
3709	3709	Antibody Screen/Antiglobulin Test(DAT & IAT)	R 43,41	R 49,93
3710	3710	Antibody Titration	R 85,87	R 98,75
3712	3712	Antibody Identification	R 100,77	R 115,88
3729	3729	Cold Agglutinins	R 42,88	R 49,31
3739	3739	Erythrocyte Count	R 26,82	R 30,84
3762	3762	Haemoglobin	R 21,39	R 24,59
3764	3764	Grouping: A B O Antigen	R 42,88	R 49,31
3765	3765	Grouping: Rh Antigen	R 42,88	R 49,31
3785	3785	Leucocyte Count	R 21,39	R 24,59
3791	3791	Haematocrit	R 21,39	R 24,59
3816	3816	T and B Cells EAC Markers	R 251,65	R 289,40
3834	3834	Red Cell Rh Phenotype	R 118,11	R 135,83
3932	3932	Anti - HIV	R 168,12	R 193,34
3953	3953	Haemolysin/ Test tube Agglutination	R 49,59	R 57,03
4117	4117	Protein: Total	R 37,13	R 42,70
4172	4172	HIV p24 antigen (Elisa Test)	R 148,12	R 170,34

**Pathology Services (continued)**

<b>SANBS-BHF Codes</b>	<b>Nappi Codes</b>	<b>Descriptions</b>	<b>Price Excl. VAT</b>	<b>Price Incl. VAT</b>
4425	4425	ACHE Test	R 150,24	R 172,78
4426	4426	HLA Typ. low res Class 1 DNA-PCR per loc	R 1 192,79	R 1 371,71
4427	4427	HLA low res.Class II PCR/DNA Locus DQB/DRB1	R 882,52	R 1 014,89
4428	4428	HLA Typing low res Class 1 or 2 DNA-PCR	R 787,08	R 905,14
4430	4430	HIV p24 Antigen	R 293,50	R 337,53
4522	4522	Alpha Feto Protein(AFP): Amnio Fluid	R 148,12	R 170,34
4531	4531	HBsAG/Anti HCV	R 172,70	R 198,60
4601	4601	Panel Typing Antibody Class I 4601	R 429,35	R 493,75
4602	4602	Panel Typing: Antibody det.: Class II	R 524,90	R 603,63
4603	4603	HLA Specific Locus/Antigen 4603	R 322,09	R 370,41
4604	4604	HLA Class I	R 620,13	R 713,15
4605	4605	HLA Class 2 Typing Serology	R 620,13	R 713,15
4607	4607	Crossmatching T-cells 4607	R 214,73	R 246,94
4608	4608	Crossmatching B-cells 4608	R 453,28	R 521,27
4614	4614	Tissue Rapid HIV Screen	R 143,00	R 164,45
4750	4750	Cell Culture, Blood/Cord Blood	R 183,23	R 210,71
4751	4751	Cell Culture, Products of Conception/ Amniotic Fluid	R 549,69	R 632,14
4752	4752	Cell Cult. Chorionic Villus Sample	R 732,92	R 842,85
4754	4754	Karyotyping, Blood/Cord Blood	R 1 649,06	R 1 896,42
4755	4755	Karyotyping, Amniotic Fluid/Chorionic Villus Sample/Prod of Conception	R 3 298,02	R 3 792,72
4757	4757	Additional Analysis, Mosaicism/Staining Procedure	R 855,07	R 983,33
4763	4763	Blood DNA Extraction	R 549,69	R 632,14
4767	4767	Prenatal Diagnosis: Amniotic Fluid or Chorionic Tissue: DNA Extraction	R1 104,48	R 1 270,15
4769	4769	Prenatal Diagnosis: Amniotic Fluid or Chorionic Tissue: Genotype Per Person: PCR	R1 472,64	R 1 693,54
78003	78003	Additional Disposal Kit	R 4 831,54	R 5 556,27
78005	709026-001	Chronic Wound Treatment Kit	R 1 765,05	R 2 029,81
78006	709025-001	Topical Haemostatic Agent	R 2 018,96	R 2 321,80
78007	709027-001	Platelet Growth Factor Macular Hole Repair	R 1 752,27	R 2 015,11
78008	78008	Platelet Growth Factor Wound Treatment	R 777,93	R 894,62
78013	78013	Antibody Identification QC	R 75,41	R 86,72
78014	78014	Aneuploidy Detection	R 1 934,93	R 2 225,16
78030	709290-001	Designated Serum Eye Drops	R 8 093,10	R 9 307,06
78041	78041	Compatibility Testing QC	R 235,36	R 270,66
78054	708799-001	Autologous Serum Eye Drops	R 8 093,10	R 9 307,06
78090	78090	Medical Examination & Consultation 18-0141	R 550,00	R 632,50
78106	78106	Therapeutic Plasma Exchange	R 16 824,16	R 19 347,79

**Pathology Services (continued)**

<b>SANBS-BHF Codes</b>	<b>Nappi Codes</b>	<b>Descriptions</b>	<b>Price Excl. VAT</b>	<b>Price Incl. VAT</b>
78129	78129	Theurapeutic Venesection	R 88,78	R 102,10
78204	78204	Red Cell Exchange	R 14 827,63	R 17 051,77
78211	78211	Thrombocytapheresis	R 13 802,29	R 15 872,63
78213	78213	Tissue Rapid HBsAg Screen	R 343,07	R 394,53
78214	78214	Tissue Rapid HIV Screen	R 343,07	R 394,53
78225	78225	Perinatal Post-Natal Mother	R 201,66	R 231,90
78230	78230	Human Platelet Antibody Screen	R 3 052,15	R 3 509,97
78231	78231	Bone Marrow Engraftment Monitoring	R 1 510,49	R 1 737,06
78416	78416	Theurapeutic Exchange ( DALI)	R 15 179,64	R 17 456,58
78850	78850	Topical Haemostatic Agent Single Dose	R 420,33	R 483,38
78851	78851	Chronic Wound Treatment Kit Single Dose	R 353,02	R 405,97
78852	78852	Platelet Growth Factor Macular Single Dg	R 350,46	R 403,03
78920		Cord Blood Cryopreservation	R 11 083,91	R 12 746,49
78921	78921	Human Platelet AG Genotyping	R 2 111,58	R 2 428,32
78922	78922	Rapid CMV Screen	R 209,35	R 240,75
78923	78923	Re-Infusion of Cryo Preserve Stem Cells	R 6 550,36	R 7 532,91
78926	78926	Stem Cell Collection/Leucopheresis	R 21 754,62	R 25 017,81
78940	78940	CD 34 Testing	R 503,32	R 578,81
78928	78928	Stem Cell Cryopreservation	R 19 609,10	R 22 550,47
78550		HLA Class 1 and 2 Antibody Screen	R 3 145,78	R 3 617,64
78551		HLA Single Antigen Class 1	R 2 956,59	R 3 400,08
78552		HLA Single Antigen Class 2	R 2 210,17	R 2 541,70
78960		Annual Cryopreserved Stem Cell Storage Fee (after 2 years of storage)	R 2 023,29	R 2 326,78
78961		Donor Lymphocyte Infusion	R 6 578,13	R 7 564,85
78962		Autologous Platelet Rich Plasma	R 12 291,31	R 14 135,00
78963		Short Term Storage Fee	R 2 418,42	R 2 781,18
78964		Handling Fee	R 2 493,77	R 2 867,84
78965		Central Venous Catheter Insertion	R 1 847,00	R 2 124,05
78966		Bone Marrow Processing	R 23 808,00	R 27 379,35
78967		Human Platelet Lysate - Research Grade, 100 ml	R 2 193,48	R 2 522,50
78968		Human Platelet Lysate - Research Grade, 250 ml	R 6 141,73	R 7 063,00
78969		Human Platelet Lysate - Clinical Grade, 100 ml	R 3 395,48	R 3 904,81
78970		Human Platelet Lysate - Clinical Grade, 250 ml	R 8 488,71	R 9 762,02
78904		ABO Blood Group System	R 3 196,92	R 3 676,46
78905		Rh Blood Group System	R 3 843,72	R 4 420,28
78906		Multiple blood group systems excluding RhD	R 3 294,15	R 3 788,27
78907		Multiple blood group systems including RhD	R 7 217,72	R 8 300,38

**Miscellaneous**

<b>SANBS-BHF Codes</b>	<b>Nappi Codes</b>	<b>Descriptions</b>	<b>Price Excl. VAT</b>	<b>Price Incl. VAT</b>
10300		Albusol 4% 200 ml	R 469,60	R 540,04
10310		Albusol 20% 100 ml	R 787,53	R 905,65
10311		Albusol 20% 50 ml	R 393,76	R 452,83
600		Emergency Blood Fridge	R 588,52	R 676,80
78535		Blood Pack for Therapeutic Venesection	R 280,02	R 322,03
78203		Blood Pack With Anticoagulant	R 122,97	R 141,42
78206	410993-018	Blood Pack, No Anticoagulant	R 168,42	R 193,68

**Board of Directors:****Executives:**

• R Reddy (CEO) • J Thomson (Medical Director)

**Company Secretary:**

• M Luthuli

**Non-Executives:**

• G Simelane (Chairman) • R Brand • F Burn • W Gumede • P Knox • V Moodley • P Mthethwa • A Ramalho • R Theunissen

The SANBS reserves the right to change prices at any time. For any queries please contact us on the following:

**Toll-free number:** 0800 11 9031, **Email:** customerservice@sanbs.org.za, **Website:** www.sanbs.org.za