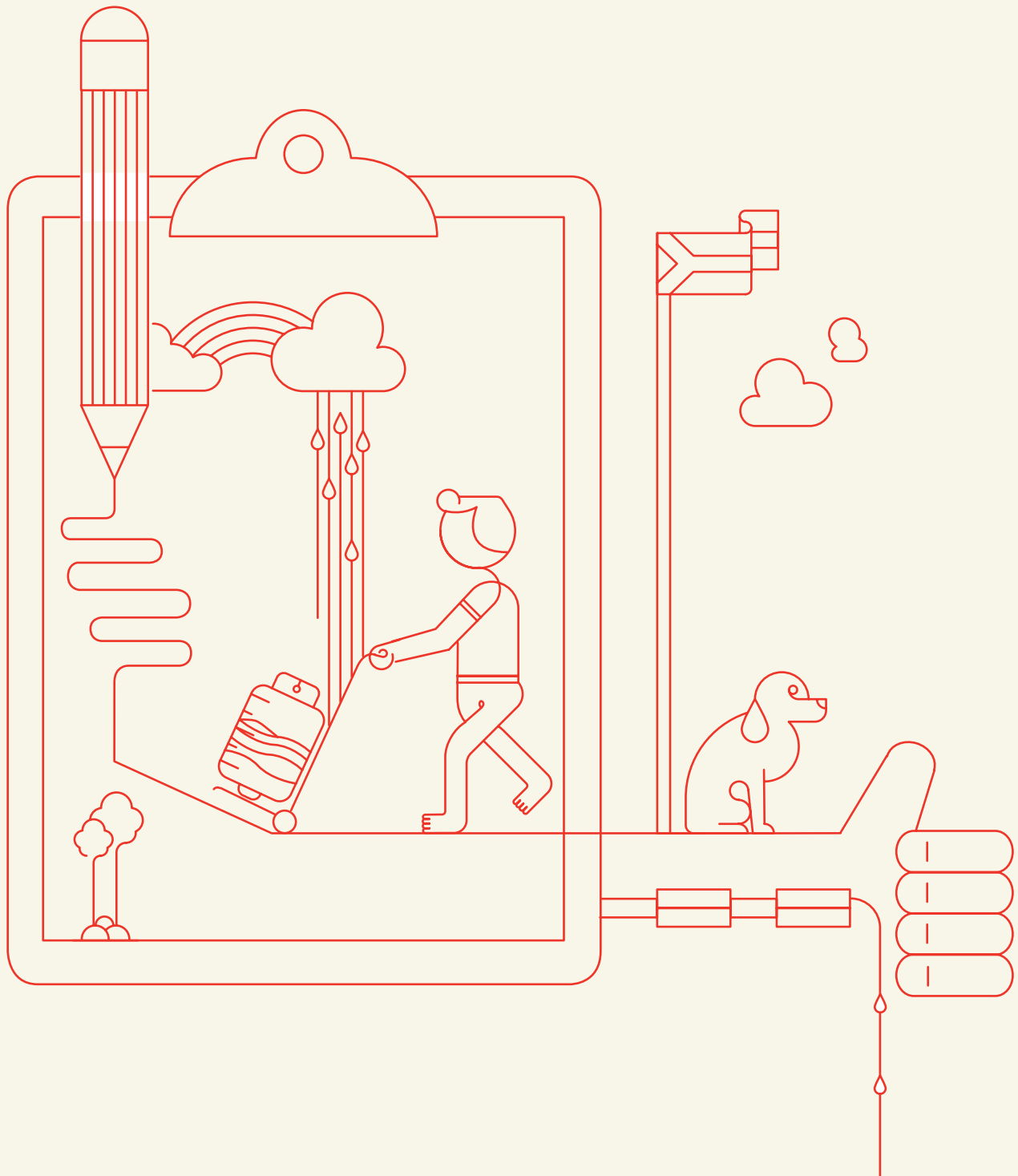




# Private Patients Pricelist

1 January 2018 – 31 March 2018



### Private Diagnostic pricing 2018

		Price Excl. VAT	Price Incl. VAT
10580	Packaging	R 78,52	R 89,51
15016	Low Ionic Reagent 15ml	151,47	R 172,67
78004	Whole Blood Reagent	R 867,82	R 989,31
78012	Buffy Coats	R 433,92	R 494,66
78015	Anti-Human Globulin Polyspecific 15ml	R 298,43	R 340,21
78018	Group A1 15ml	R 176,34	R 201,03
78019	Group A2 15ml	R 176,34	R 201,03
78020	Group B 15ml	R 176,34	R 201,03
78450	Anti-A Monoclonal 5ml	R 82,45	R 94,00
78452	Anti-B Monoclonal 5ml	R 82,45	R 94,00
78454	Anti-A,B Monoclonal 5ml	R 82,45	R 94,00
78461	Anti-D saline tube & slide monoclonal 5ml	R 131,44	R 149,85
78467	Anti-D IgM+IgG blend Monoclonal 5ml	R 137,76	R 157,04
78471	Anti-Human Globulin Polyspecific 5ml	R 111,35	R 126,94
78478	AB serum 5ml	R 83,36	R 95,03
78479	Human Complement 2ml	R 71,96	R 82,03
78482	Lyoph. Bromelin tube & microwell 5ml	R 67,76	R 77,25
78484	Antibody positive control serum 5ml	R 72,59	R 82,76
78487	AB serum 20ml	R 297,70	R 339,38
78488	Group A1 5ml	R 68,66	R 78,28
78490	Group A2 5ml	R 68,66	R 78,28
78492	Group B 5ml	R 68,66	R 78,28
78494	Group O R1R2 5ml	R 75,22	R 85,75
78496	Group O r 5ml	R 75,22	R 85,75
78502	Sensitized cells 5ml	R 92,11	R 105,00
78508	Screen cell set (1 & 2) - 2 X 5ml	R 181,35	R 206,74
78510	Pooled screen cells - 5ml	R 90,95	R 103,68
78516	Panel cell set 9 x 2ml	R 479,49	R 546,62
78517	Panel cell set 9 x 1ml	R 239,63	R 273,18
78518	Panel cell set 9 x 5ml	R 1212,92	R 1 382,73
78519	Group O Rh Positive (R1 R2) 15ml	R 196,03	R 223,48
78521	Group O r 15ml	R 196,03	R 223,48
78522	Group O Screen 1 Cells 15ml	R 248,39	R 283,16
78523	Group O Screen 2 Cells 15ml	R 248,39	R 283,16
78524	Panel cell set 9 x 15ml	R 1721,55	R 1 962,56
78525	Sensitized cells 15ml	R 246,83	R 281,39
78529	Anti-A Monoclonal 15ml	R 221,47	R 252,47
78530	Anti-B Monoclonal 15ml	R 221,47	R 252,47
78531	Anti A,B Monoclonal 15ml	R 222,02	R 253,10
78536	Screening Cells Pooled	R 222,02	R 253,10

## Blood and Platelet Productions

### Red Cells

SANBS-BHF Codes	Nappi Codes	Descriptions	Price Excl. VAT	Price Incl. VAT
78040	708800-001	Red Cell Concentrate	R 2 007,71	R 2 288,79
78051	708802-001	Red Cell Conc. Leucocyte Depleted	R 3 280,59	R 3 739,87
78043	708803-001	Red Cell Conc. Paed. Leucodepleted	R 1 856,26	R 2 116,13

### Platelets

SANBS-BHF Codes	Nappi Codes	Descriptions	Price Excl. VAT	Price Incl. VAT
78124	708804-001	Platelet Conc. Single Donor Apherisis	R 10 490,92	R 11 959,65
78125	708805-001	Platelet Conc. Leucocyte Depleted, Pooled	R 9 355,64	R 10 665,44
78127	708808-001	Platelet Concentrate (Paediatric)	R 2 552,86	R 2 910,26
78122	708806-001	Platelet Concentrate Pooled	R 8 458,94	R 9 643,19

### Whole Blood

SANBS-BHF Codes	Nappi Codes	Descriptions	Price Excl. VAT	Price Incl. VAT
78001	708807-001	Whole Blood	R 2 223,52	R 2 534,81
78059	708809-001	Whole Blood Leucocyte Depleted	R 3 496,31	R 3 985,79
78011	708810-001	Whole Blood Paediatric	R 1 856,26	R 2 116,14

### Plasma

SANBS-BHF Codes	Nappi Codes	Descriptions	Price Excl. VAT	Price Incl. VAT
78103	708811-001	Cryoprecipitate (Fibrinogen Rich)	R 1 134,80	R 1 293,67
78174	708812-001	Frozen Plasma - Cryo Poor Donor Retested	R 1 295,92	R 1 477,35
78179	716662-001	Fresh Frozen Plasma - Donor Retested (Paediatric)	R 801,09	R 913,24
78176	708813-001	Fresh Frozen Plasma - Donor Retested	R 1 559,48	R 1 777,81

### Blood and Administration Sets

SANBS-BHF Codes	Nappi Codes	Descriptions	Price Excl. VAT	Price Incl. VAT
78199	440415-002	Blood Filters : 1 Units	R 944,32	R 1 076,53
78200	406059-001	Blood Filters : 2 Units	R 1 810,45	R 2 063,91
78197	628761-001	Platelet Filter 3 - 6 Unit PL2VAE	R 1 748,09	R 1 992,82
78201	470471-001	Set, Blood and plasma Recipient Set	R 36,47	R 41,58
78202	470474-001	Set, Platelet Recipient	R 94,96	R 108,25
78609		Cryopreservation Bag	R 764,91	R 872,00

## Blood and Platelet Productions (continued)

### Additional Services and Surcharges

SANBS-BHF Codes	Nappi Codes	Descriptions	Price Excl. VAT	Price Incl. VAT
78050		Irradiation Fee	R 418,18	R 476,73
10210		Transfusion Crossmatch	R 893,38	R 1 018,46
10333		Type and Screen	R 388,37	R 442,74
78400		Routine Collection Fee	R 176,86	R 201,62
78401		Routine Delivery Fee	R 176,85	R 201,61
78402		Emergency Round Trip	R 1 203,66	R 1 372,17
78403		Emergency One Way Fee	R 842,57	R 960,53
78989		Telephone Consultation 18-0130	R 248,53	R 283,33
78177		FFP Autologous/Directed Fee	R 176,15	R 200,81
78049		Directed Donation	R 215,05	R 245,15
78406		After Hours	R 451,39	R 514,58
78408		Autologous/Directed WB	R 222,36	R 253,49
78407		Autologous/Directed RCC	R 200,74	R 228,84
78409		Blood Return Basis	R 178,86	R 203,90
78410		Emergency Cross-Match	R 136,20	R 155,27
78412		HLA Match	R 1 311,42	R 1 495,02
78413		Rare Donation	R 1 541,30	R 1 757,08
78415		Washed RCC/WB	R 1 284,38	R 1 464,19
78414		Offsite Charge	R 1 809,95	R 2 063,34
78417		Emergency Blood Surcharge	R 200,76	R 228,87

### Pathology Services

SANBS-BHF Codes	Nappi Codes	Descriptions	Price Excl. VAT	Price Incl. VAT
3709	3709	Antibody Screen/Antiglobulin Test(DAT & IAT)	R 37,58	R 42,84
3710	3710	Antibody Titration	R 74,33	R 84,74
3712	3712	Antibody Identification	R 87,22	R 99,43
3729	3729	Cold Agglutinins	R 37,12	R 42,31
3739	3739	Erythrocyte count	R 23,22	R 26,47
3762	3762	Haemoglobin	R 18,51	R 21,10
3764	3764	Grouping : A B O Antigen	R 37,12	R 42,31
3765	3765	Grouping : Rh antigen	R 37,12	R 42,31
3785	3785	Leucocyte Count	R 18,51	R 21,10
3791	3791	Haematocrit	R 18,51	R 21,10
3816	3816	T and B Cells EAC markers	R 217,83	R 248,33
3834	3834	Red Cell Rh Phenotype	R 102,24	R 116,55
3932	3932	Anti - HIV	R 145,53	R 165,90
3953	3953	Haemolysin/ Test tube Agglutination	R 42,92	R 48,93
78054	708799-001	Autologous Serum Eye Drops	R 3 901,00	R 4 447,15
78090	78090	Medical Examination & Consultation 18-0141	R 315,51	R 359,68

## Pathology Services (continued)

SANBS-BHF Codes	Nappi Codes	Descriptions	Price Excl. VAT	Price Incl. VAT
4117	4117	Protein : Total	R 32,14	R 36,64
4172	4172	HIV p24 antigen (Elisa Test)	R 128,22	R 146,17
4425	4425	ACHE Test	R 130,05	R 148,26
4426	4426	HLA Typ. low res Class I DNA-PCR per loc	R 1 032,50	R 1 177,05
4427	4427	HLA low res.Class II PCR/DNA Locus DQB/DRB1	R 763,92	R 870,87
4428	4428	HLA Typing low res Class I or 2 DNA-PCR	R 681,30	R 776,69
4430	4430	HIV p24 antigen	R 254,06	R 289,63
4522	4522	Alpha Feto Protein(AFP): Amnio Fluid	R 128,22	R 146,17
4531	4531	HBsAG/Anti HCV	R 149,49	R 170,42
4601	4601	Panel typing antibody Class I 4601	R 371,65	R 423,68
4602	4602	Panel typing: Antibody det.: Class II	R 454,36	R 517,97
4603	4603	HLA Specific locus/antigen 4603	R 278,81	R 317,84
4604	4604	HLA Class I	R 536,79	R 611,94
4605	4605	HLA Class 2 typing Serology	R 536,79	R 611,94
4607	4607	Crossmatching T-cells 4607	R 185,87	R 211,89
4608	4608	Crossmatching B-cells 4608	R 392,36	R 447,29
4614	4614	Tissue Rapid HIV Screen	R 123,78	R 141,11
4750	4750	Cell Culture, blood/cord blood	R 158,60	R 180,81
4751	4751	Cell Culture, Products of conception/Amniotic Fluid	R 475,82	R 542,43
4752	4752	Cell Cult. Chorionic Villus Sample	R 634,42	R 723,24
4754	4754	Karyotyping, Blood/Cord Blood	R 1 427,44	R 1 627,29
4755	4755	Karyotyping, amniotic Fluid/Chorionic villus sample/prod of conception	R 2 854,80	R 3 254,48
4757	4757	Additional analysis, Mosaicism/Staining Procedure	R 740,16	R 843,78
4763	4763	Blood DNA Extraction	R 475,82	R 542,43
4767	4767	Prenatal diagnosis: Amniotic fluid or chorionic tissue: DNA extraction	R 956,05	R 1 089,90
4769	4769	Prenatal diagnosis: Amniotic fluid or chorionic tissue: Genotype per person: PCR	R 1 274,74	R 1 453,20
78003	78003	Additional Disposal Kit	R 4 182,24	R 4 767,75
78005	709026-001	Chronic wound treatment kit	R 1 527,85	R 1 741,75
78006	709025-001	Topical Haemostatic Agent	R 1 819,29	R 2 073,99
78007	709027-001	Platelet growth Factor macular hole repair	R 1 516,79	R 1 729,14
78008	78008	Platelet growth factor wound treatment	R 673,39	R 767,66
78013	78013	Antibody identification QC	R 65,27	R 74,41
78014	78014	Aneuploidy Detection	R 1 674,90	R 1 909,38
78030	709290-001	Designated Serum Eye Drops	R 3 901,00	R 4 447,15
78041	78041	Compatibility Testing QC	R 203,73	R 232,25

## Pathology Services (continued)

SANBS-BHF Codes	Nappi Codes	Descriptions	Price Excl. VAT	Price Incl. VAT
78106	78106	Therapeutic Plasma Exchange	R 10 570,35	R 12 050,20
78129	78129	Therapeutic Venesection	R 76,85	R 87,61
78204	78204	Red Cell Exchange	R 7 056,35	R 8 044,24
78211	78211	Thrombocytapheresis	R 7 126,88	R 8 124,65
78213	78213	Tissue Rapid HBsAg Screen	R 296,96	R 338,54
78214	78214	Tissue Rapid HIV Screen	R 296,96	R 338,54
78225	78225	Perinatal Post-Natal Mother	R 174,56	R 198,99
78230	78230	Human Platelet Antibody Screen	R 2 641,97	R 3 011,85
78231	78231	Bone Marrow Engraftment Monitoring	R 1 307,50	R 1 490,55
78416	78416	Therapeutic Exchange ( DALI)	R 13 139,68	R 14 979,23
78850	78850	Topical Haemostatic Agent Single Dose	R 363,84	R 414,78
78851	78851	Chronic Wound Treatment Kit Single Dose	R 305,58	R 348,36
78852	78852	Platelet growth factor macular Single Dg	R 303,36	R 345,83
78920	78920	Cord Blood Cryopreservation	R 9 594,37	R 10 937,58
78921	78921	Human Platelet AG genotyping	R 1 827,81	R 2 083,71
78922	78922	Rapid CMV Screen	R 181,21	R 206,58
78923	78923	Re-Infusion Of Cryo Preserve Stem Cells	R 730,05	R 832,25
78926	78926	Stem Cell Collection/Leucopheresis	R 13 342,19	R 15 210,10
78928	78928	Stem Cell Cryopreservation	R 9 594,37	R 10 937,58

## Miscellaneous

SANBS-BHF Codes	Nappi Codes	Descriptions	Price Excl. VAT	Price Incl. VAT
10300		Albusol 4% 200 ml		R 0,00
10310		Albusol 20% 100 ml		R 0,00
10311		Albusol 20% 50 ml		R 0,00
600		Emergency Blood Fridge	R 509,43	R 580,75
78535		Blood Pack For therapeutic Venesection	R 242,39	R 276,33
78203		Blood Pack With Anticoagulant	R 106,45	R 121,35
78206	410993-018	Blood Pack, No Anticoagulant	R 145,78	R 166,19

### Board of Directors:

#### Executives:

• Jackie Thomson (Acting CEO)

#### Company Secretary:

• M Luthuli

#### Non-Executives:

• G Simelane (Chairman) • A Ramalho • W Gumede • P Knox • V Moodley • R Theunissen • R Brand

The SANBS reserves the right to change prices at any time.

For any queries please contact us on the following

Toll-free number: 0800 11 9031

Email: [customerservice@sanbs.org.za](mailto:customerservice@sanbs.org.za)

Website: [www.sanbs.org.za](http://www.sanbs.org.za)