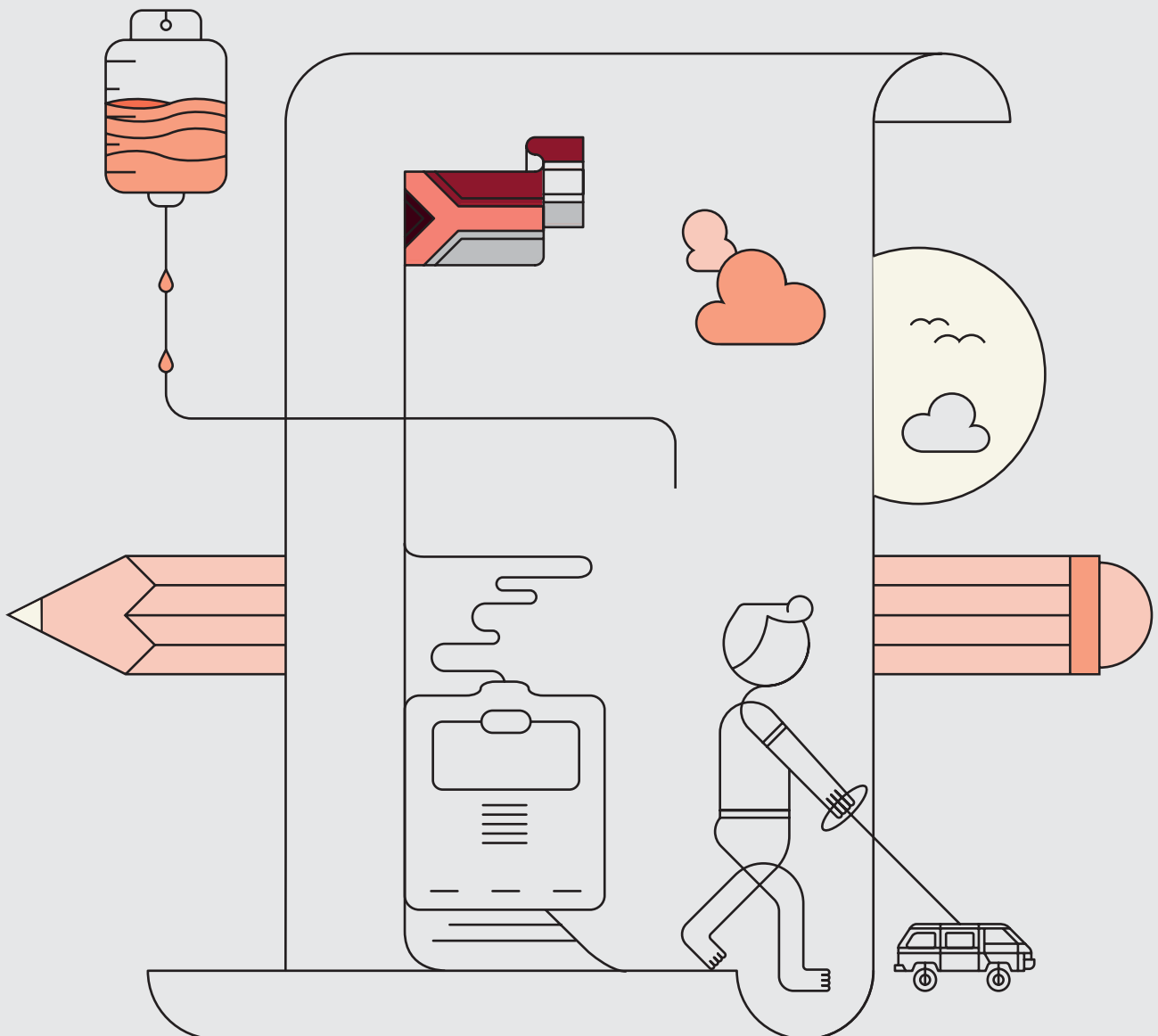




State Patients Pricelist

1 April 2021 – 31 March 2022



State Diagnostic Pricing 2021 - 2022

		Price Excl. VAT	Price Incl. VAT
10580	Packaging	R 87.22	R 100.30
15016	Low Ionic Reagent 15ml	R 195.62	R 224.97
78004	Whole Blood Reagent	R 811.12	R 932.79
78012	Buffy Coats	R 405.54	R 466.37
78015	Anti-Human Globulin Polyspecific 15ml	R 344.76	R 396.48
78018	Group A1 15ml	R 203.71	R 234.27
78019	Group A2 15ml	R 203.71	R 234.27
78020	Group B 15ml	R 203.71	R 234.27
78461	Anti-D saline tube & slide monoclonal 5ml	R 151.85	R 174.63
78467	Anti-D IgM+IgG blend Monoclonal 5ml	R 159.14	R 183.01
78482	Lyoph. Bromelin tube & microwell 5ml	R 78.28	R 90.03
78484	Antibody positive control serum 5ml	R 83.86	R 96.44
78487	AB serum 20ml	R 343.92	R 395.50
78510	Pooled screen cells - 5ml	R 105.07	R 120.83
78518	Panel cell set 9 x 5ml	R 1,401.23	R 1,611.42
78519	Group O Rh Positive (R1 R2) 15ml	R 226.47	R 260.44
78521	Group O r 15ml	R 226.47	R 260.44
78522	Group O Screen 1 Cells 15ml	R 286.95	R 329.99
78523	Group O Screen 2 Cells 15ml	R 286.95	R 329.99
78524	Panel cell set 9 x 15ml	R 1,988.81	R 2,287.14
78525	Sensitized cells 15ml	R 285.15	R 327.93
78529	Anti-A Monoclonal 15ml	R 255.85	R 294.23
78530	Anti-B Monoclonal 15ml	R 255.85	R 294.23
78531	Anti A,B Monoclonal 15ml	R 256.49	R 294.96
78536	Screening Cells Pooled	R 256.49	R 294.96

Blood and Platelet Productions

Red Cells

SANBS-BHF Codes	Nappi Codes	Descriptions	Price Excl. VAT	Price Incl. VAT
78040	708800-001	Red Cell Concentrate	R 1,876.67	R 2,158.17
78051	708802-001	Red Cell Conc. Leucocyte Depleted	R 3,066.38	R 3,526.34
78043	708803-001	Red Cell Conc. Paed. Leucodepleted	R 1,734.38	R 1,994.53

Platelets

SANBS-BHF Codes	Nappi Codes	Descriptions	Price Excl. VAT	Price Incl. VAT
78124	708804-001	Platelet Conc. Single Donor Apherisis	R 10,876.59	R 12,508.08
78125	708805-001	Platelet Conc. Leucocyte Depleted, Pooled	R 9,954.87	R 11,448.10
78127	708808-001	Platelet Concentrate (Paediatric)	R 2,386.18	R 2,744.10
78122	708806-001	Platelet Concentrate Pooled	R 7,906.58	R 9,092.57

Whole Blood

SANBS-BHF Codes	Nappi Codes	Descriptions	Price Excl. VAT	Price Incl. VAT
78001	708807-001	Whole Blood	R 2,078.30	R 2,390.04
78059	708809-001	Whole Blood Leucocyte Depleted	R 3,268.03	R 3,758.23
78011	708810-001	Whole Blood Paediatric	R 1,734.38	R 1,994.53

Plasma

SANBS-BHF Codes	Nappi Codes	Descriptions	Price Excl. VAT	Price Incl. VAT
78103	708811-001	Cryoprecipitate (Fibrinogen Rich)	R 1,060.74	R 1,219.85
78174	708812-001	Frozen Plasma - Cryo Poor Donor Retested	R 1,211.17	R 1,392.84
78179	716662-001	Fresh Frozen Plasma - Donor Retested (Paediatric)	R 871.70	R 1,002.68
78176	708813-001	Fresh Frozen Plasma - Donor Retested	R 1,501.31	R 1,726.51

Blood and Administration Sets

SANBS-BHF Codes	Nappi Codes	Descriptions	Price Excl. VAT	Price Incl. VAT
78199	440415-002	Blood Filters : 1 Unit	R 1,090.93	R 1,254.57
78200	406059-001	Blood Filters : 2 Units	R 2,091.53	R 2,405.26
78197	628761-001	Platelet Filter 3 - 6 Unit PL2VAE	R 2,019.49	R 2,322.41
78201	470471-001	Set, Blood and Plasma Recipient Set	R 23.24	R 26.72
78202	470474-001	Set, Platelet Recipient	R 109.70	R 126.16
78609		Cryopreservation Bag	R 883.66	R 1,016.21

Blood and Platelet Productions (continued)

Additional Services and Surcharges

SANBS-BHF Codes	Nappi Codes	Descriptions	Price Excl. VAT	Price Incl. VAT
78050		Irradiation Fee	R 402.52	R 462.90
10210		Transfusion Crossmatch	R 835.05	R 960.31
10333		Type and Screen	R 373.93	R 430.02
78400		Routine Collection Fee	R 204.32	R 234.97
78401		Routine Delivery Fee	R 204.30	R 234.95
78402		Emergency Round Trip	R 1,390.53	R 1,599.11
78403		Emergency One Way Fee	R 973.38	R 1,119.39
78989		Telephone Consultation 18-0130	R 287.12	R 330.18
78177		FFP Autologous/Directed Fee	R 203.50	R 234.03
78049		Directed Donation	R 248.43	R 285.70
78406		After Hours	R 421.95	R 485.25
78408		Autologous/Directed WB	R 207.82	R 239.99
78407		Autologous/Directed RCC	R 187.64	R 215.79
78409		Blood Return Basis	R 206.62	R 237.62
78410		Emergency Cross-Match	R 157.34	R 180.95
78412		HLA Match	R 1,470.97	R 1,691.62
78413		Rare Donation	R 1,440.63	R 1,656.73
78415		Washed RCC/WB	R 1,440.63	R 1,656.73
78414		Offsite Charge	R 2,090.95	R 2,404.59
78417		Emergency Blood Surcharge	R 187.68	R 215.84

Pathology Services

SANBS-BHF Codes	Nappi Codes	Descriptions	Price Excl. VAT	Price Incl. VAT
3709	3709	Antibody Screen/Antiglobulin Test (DAT & IAT)	R 43.41	R 49.93
3710	3710	Antibody Titration	R 85.87	R 98.75
3712	3712	Antibody Identification	R 100.77	R 115.88
3729	3729	Cold Agglutinins	R 42.88	R 49.31
3739	3739	Erythrocyte Count	R 26.81	R 30.84
3762	3762	Haemoglobin	R 21.39	R 24.60
3764	3764	Grouping : A B O Antigen	R 42.88	R 49.31
3765	3765	Grouping : Rh antigen	R 42.88	R 49.31
3785	3785	Leucocyte Count	R 21.39	R 24.60
3791	3791	Haematocrit	R 21.39	R 24.60
3816	3816	T and B Cells EAC markers	R 251.65	R 289.39
3834	3834	Red Cell Rh Phenotype	R 118.11	R 135.83
3932	3932	Anti - HIV	R 168.12	R 193.34
3953	3953	Haemolysin/ Test tube Agglutination	R 49.58	R 57.02
4117	4117	Protein : Total	R 37.14	R 42.71
4172	4172	HIV p24 antigen (Elisa Test)	R 148.12	R 170.33

Pathology Services (continued)

SANBS-BHF Codes	Nappi Codes	Descriptions	Price Excl. VAT	Price Incl. VAT
4425	4425	ACHE Test	R 150.24	R 172.78
4426	4426	HLA Typ. low res Class 1 DNA-PCR per loc	R 1,192.80	R 1,371.72
4427	4427	HLA low res.Class II PCR/DNA Locus DQB/DRB1	R 882.52	R 1,014.90
4428	4428	HLA Typing low res Class 1 or 2 DNA-PCR	R 787.08	R 905.14
4430	4430	HIV p24 antigen	R 293.50	R 337.52
4522	4522	Alpha Feto Protein(AFP): Amnio Fluid	R 148.12	R 170.33
4531	4531	HBsAG/Anti HCV	R 172.69	R 198.60
4601	4601	Panel typing antibody Class I 4601	R 429.34	R 493.74
4602	4602	Panel typing: Antibody det.: Class II	R 524.89	R 603.63
4603	4603	HLA Specific locus/antigen 4603	R 322.09	R 370.40
4604	4604	HLA Class I	R 620.13	R 713.15
4605	4605	HLA Class 2 typing Serology	R 620.13	R 713.15
4607	4607	Crossmatching T-cells 4607	R 214.72	R 246.93
4608	4608	Crossmatching B-cells 4608	R 453.28	R 521.28
4614	4614	Tissue Rapid HIV Screen	R 143.01	R 164.46
4750	4750	Cell Culture, blood/cord blood	R 183.23	R 210.71
4751	4751	Cell Culture, Products of conception/ Amniotic Fluid	R 549.69	R 632.14
4752	4752	Cell Cult. Chorionic Villus Sample	R 732.92	R 842.85
4754	4754	Karyotyping, Blood/Cord Blood	R 1,649.06	R 1,896.42
4755	4755	Karyotyping, amniotic Fluid/Chorionic villus sample/prod of conception	R 3,298.02	R 3,792.72
4757	4757	Additional analysis, Mosaicism/Staining Procedure	R 855.07	R 983.33
4763	4763	Blood DNA Extraction	R 549.69	R 632.14
4767	4767	Amniotic Fluid : DNA Extraction	R 1,099.22	R 1,264.11
4769	4769	Amniotic Fluid : Genotype : PCR	R 1,465.63	R 1,685.47
78003	78003	Additional Disposal Kit	R 4,831.54	R 5,556.27
78005	709026-001	Chronic Wound Treatment Kit	R 1,765.05	R 2,029.81
78006	709025-001	Topical Haemostatic Agent	R 2,101.73	R 2,416.99
78007	709027-001	Platelet Growth Factor Macular Hole Repair	R 1,752.27	R 2,015.11
78008	78008	Platelet Growth Factor Wound Treatment	R 777.93	R 894.62
78013	78013	Antibody identification QC	R 75.41	R 86.72
78014	78014	Aneuploidy Detection	R 1,934.93	R 2,225.16
78030	709290-001	Designated Serum Eye Drops	R 4,506.64	R 5,182.64
78041	78041	Compatibility Testing QC	R 235.36	R 270.66
78054	708799-001	Autologous Serum Eye Drops	R 4,506.64	R 5,182.64
78090	78090	Medical Examination & Consultation 18-0141	R 364.49	R 419.16

Pathology Services (continued)

SANBS-BHF Codes	Nappi Codes	Descriptions	Price Excl. VAT	Price Incl. VAT
78106	78106	Therapeutic Plasma Exchange	R 14,155.95	R 16,279.34
78129	78129	Theurapeutic Venesection	R 88.78	R 102.10
78204	78204	Red Cell Exchange	R 13,959.83	R 16,053.80
78211	78211	Thrombocytapheresis	R 13,537.07	R 15,567.62
78213	78213	Tissue Rapid HBsAg Screen	R 343.07	R 394.53
78214	78214	Tissue Rapid HIV Screen	R 343.07	R 394.53
78225	78225	Perinatal Post-Natal Mother	R 201.66	R 231.90
78230	78230	Human Platelet Antibody Screen	R 3,052.15	R 3,509.97
78231	78231	Bone Marrow Engraftment Monitoring	R 1,510.49	R 1,737.06
78416	78416	Theurapeutic Exchange (DALI)	R 15,179.64	R 17,456.58
78850	78850	Topical Haemostatic Agent Single Dose	R 420.33	R 483.38
78851	78851	Chronic Wound Treatment Kit Single Dose	R 353.02	R 405.97
78852	78852	Platelet growth factor macular Single Dg	R 350.46	R 403.03
78920	78920	Cord Blood Cryopreservation	R 11,083.91	R 12,746.49
78921	78921	Human Platelet AG genotyping	R 2,111.58	R 2,428.32
78922	78922	Rapid CMV Screen	R 209.35	R 240.75
78923	78923	Re-Infusion Of Cryo Preserve Stem Cells	R 843.39	R 969.89
78926	78926	Stem Cell Collection/Leucopheris	R 17,478.30	R 20,100.04
78940	78940	CD 34 Testing	R 503.32	R 578.81
78928	78928	Stem Cell Cryopreservation	R 11,951.31	R 13,744.00
78963		Short Term Storage Fee	R 2,418.42	R 2,781.18
78964		Handling Fee	R 2,493.77	R 2,867.84
78965		Central Venous Catheter Insertion	R 1,847.00	R 2,124.05
78966		Bone Marrow Processing	R 23,808.13	R 27,379.35
78967		Human Platelet Lysate - Research Grade, 100ml	R 2,193.48	R 2,522.50
78968		Human Platelet Lysate - Research Grade, 250ml	R 6,141.73	R 7,063.00
78969		Human Platelet Lysate - Clinical Grade, 100ml	R 3,395.48	R 3,904.81
78970		Human Platelet Lysate - Clinical Grade, 250ml	R 8,488.71	R 9,762.02

Miscellaneous				
SANBS-BHF Codes	Nappi Codes	Descriptions	Price Excl. VAT	Price Incl. VAT
10300		Albusol 4% 200 ml	R 415.05	R 477.30
10310		Albusol 20% 100 ml	R 696.02	R 800.43
10311		Albusol 20% 50 ml	R 348.01	R 400.21
600		Emergency Blood Fridge	R 588.52	R 676.80
78100		Paternity Investigation - 1 Client	R 1,631.29	R 1,875.98
78950		Paternity Investigation - 3 Client	R 4,893.97	R 5,628.07
78535		Blood Pack For therapeutic Venesection	R 280.02	R 322.03
78203		Blood Pack With Anticoagulant	R 122.97	R 141.42
78206	410993-018	Blood Pack, No Anticoagulant	R 175.99	R 202.39

Board of Directors:

Executives:

- R Reddy (CEO) • K van den Berg (Acting Medical Director)

Non-Executives:

- A Ramalho (Chairman) • F Burn • S Fakie • R Theunissen • P Mthethwa • P Knox • G Leong • M Vaithilingum

The SANBS reserves the right to change prices at any time. For any queries please contact us on the following:

Toll-free number: 0800 11 9031, **Email:** customerservice@sanbs.org.za, **Website:** www.sanbs.org.za