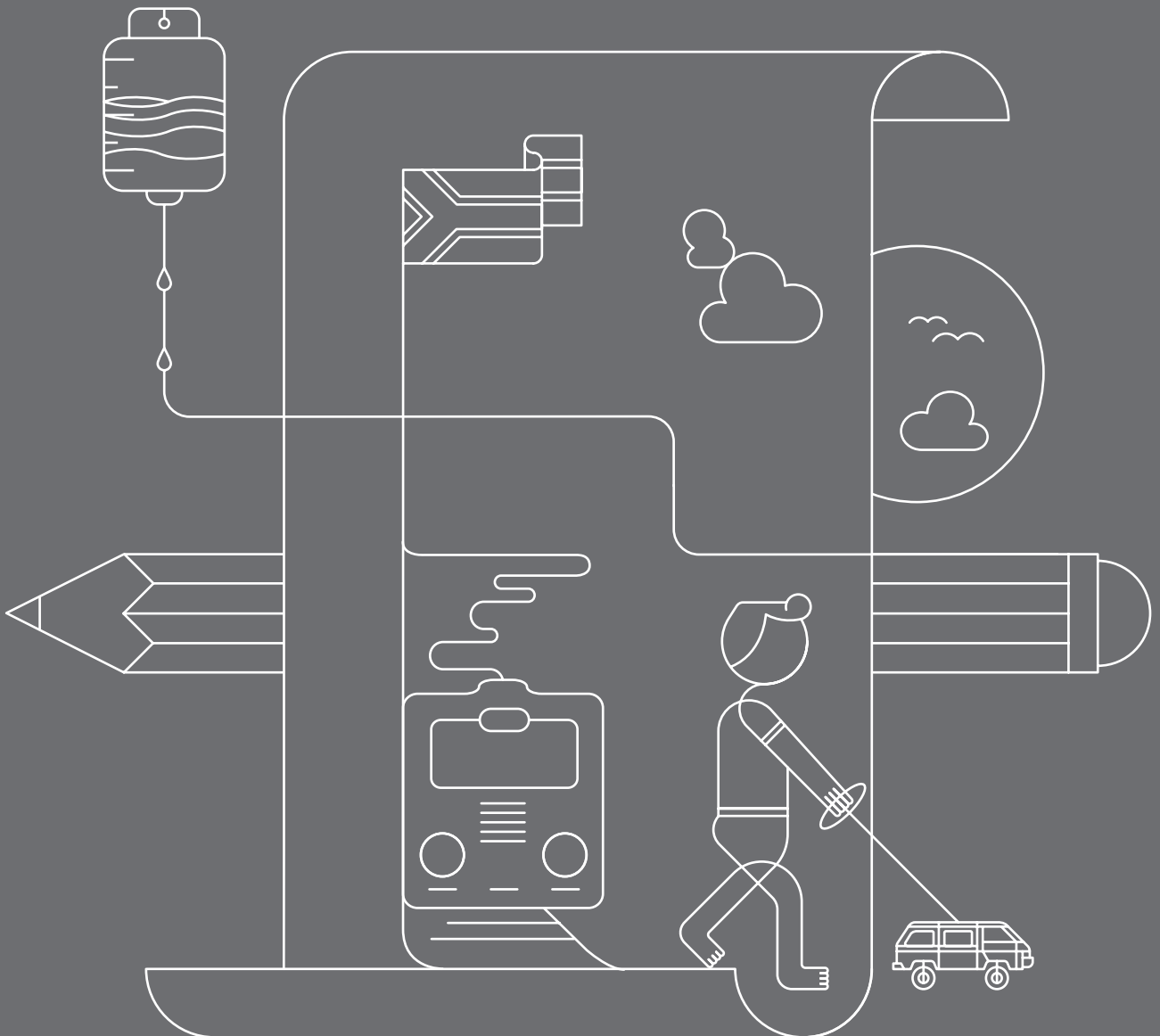




State Patients Pricelist

1 April 2020 – 31 March 2021



Blood and Platelet Productions

Red Cells

SANBS-BHF Codes	Nappi Codes	Descriptions	Price Excl. VAT	Price Incl. VAT
78040	708800-001	Red Cell Concentrate	R 1,802.76	R 2,073.17
78051	708802-001	Red Cell Conc. Leucocyte Depleted	R 2,945.61	R 3,387.45
78043	708803-001	Red Cell Conc. Paed. Leucodepleted	R 1,666.07	R 1,915.98

Platelets

SANBS-BHF Codes	Nappi Codes	Descriptions	Price Excl. VAT	Price Incl. VAT
78124	708804-001	Platelet Conc. Single Donor Apherisis	R 10,448.22	R 12,015.45
78125	708805-001	Platelet Conc. Leucocyte Depleted, Pooled	R 9,562.80	R 10,997.22
78127	708808-001	Platelet Concentrate (Paediatric)	R 2,292.20	R 2,636.03
78122	708806-001	Platelet Concentrate Pooled	R 7,595.18	R 8,734.45

Whole Blood

SANBS-BHF Codes	Nappi Codes	Descriptions	Price Excl. VAT	Price Incl. VAT
78001	708807-001	Whole Blood	R 1,996.45	R 2,295.91
78059	708809-001	Whole Blood Leucocyte Depleted	R 3,139.31	R 3,610.21
78011	708810-001	Whole Blood Paediatric	R 1,666.07	R 1,915.98

Plasma

SANBS-BHF Codes	Nappi Codes	Descriptions	Price Excl. VAT	Price Incl. VAT
78103	708811-001	Cryoprecipitate (Fibrinogen Rich)	R 1,018.96	R 1,171.81
78174	708812-001	Frozen Plasma - Cryo Poor Donor Retested	R 1,163.46	R 1,337.98
78179	716662-001	Fresh Frozen Plasma - Donor Retested (Paediatric)	R 837.56	R 963.19
78176	708813-001	Fresh Frozen Plasma - Donor Retested	R 1,442.18	R 1,658.51

Blood and Administration Sets

SANBS-BHF Codes	Nappi Codes	Descriptions	Price Excl. VAT	Price Incl. VAT
78199	440415-002	Blood Filters : 1 Unit	R 1,047.96	R 1,205.16
78200	406059-001	Blood Filters : 2 Units	R 2,009.16	R 2,310.53
78197	628761-001	Platelet Filter 3 - 6 Unit PL2VAE	R 1,939.95	R 2,230.94
78201	470471-001	Set, Blood and Plasma Recipient Set	R 22.32	R 25.67
78202	470474-001	Set, Platelet Recipient	R 105.38	R 121.19
78609		Cryopreservation Bag	R 848.86	R 976.19

Blood and Platelet Productions (continued)

Additional Services and Surcharges

SANBS-BHF Codes	Nappi Codes	Descriptions	Price Excl. VAT	Price Incl. VAT
78050		Irradiation Fee	R 386.67	R 444.67
10210		Transfusion Crossmatch	R 802.16	R 922.49
10333		Type and Screen	R 359.20	R 413.08
78400		Routine Collection Fee	R 196.27	R 225.71
78401		Routine Delivery Fee	R 196.27	R 225.71
78402		Emergency Round Trip	R 1,335.77	R 1,536.13
78403		Emergency One Way Fee	R 935.05	R 1,075.30
78989		Telephone Consultation 18-0130	R 275.81	R 317.18
78177		FFP Autologous/Directed Fee	R 195.49	R 224.81
78049		Directed Donation	R 238.65	R 274.44
78406		After Hours	R 405.34	R 466.14
78408		Autologous/Directed WB	R 199.64	R 229.58
78407		Autologous/Directed RCC	R 180.25	R 207.29
78409		Blood Return Basis	R 198.49	R 228.26
78410		Emergency Cross-Match	R 151.15	R 173.82
78412		HLA Match	R 1,413.04	R 1,624.99
78413		Rare Donation	R 1,383.89	R 1,591.48
78415		Washed RCC/WB	R 1,383.89	R 1,591.48
78414		Offsite Charge	R 2,008.60	R 2,309.89
78417		Emergency Blood Surcharge	R 180.29	R 207.33

Pathology Services

SANBS-BHF Codes	Nappi Codes	Descriptions	Price Excl. VAT	Price Incl. VAT
3709	3709	Antibody Screen/Antiglobulin Test (DAT & IAT)	R 41.70	R 47.96
3710	3710	Antibody Titration	R 82.49	R 94.86
3712	3712	Antibody Identification	R 96.80	R 111.32
3729	3729	Cold Agglutinins	R 41.19	R 47.37
3739	3739	Erythrocyte Count	R 25.76	R 29.62
3762	3762	Haemoglobin	R 20.55	R 23.63
3764	3764	Grouping : A B O Antigen	R 41.19	R 47.37
3765	3765	Grouping : Rh antigen	R 41.19	R 47.37
3785	3785	Leucocyte Count	R 20.55	R 23.63
3791	3791	Haematocrit	R 20.55	R 23.63
3816	3816	T and B Cells EAC markers	R 241.74	R 278.00
3834	3834	Red Cell Rh Phenotype	R 113.46	R 130.48
3932	3932	Anti - HIV	R 161.50	R 185.72
3953	3953	Haemolysin/ Test tube Agglutination	R 47.63	R 54.78
4117	4117	Protein : Total	R 35.67	R 41.02
4172	4172	HIV p24 antigen (Elisa Test)	R 142.28	R 163.62

SANBS reserves the right to change prices at any time.

Pathology Services (continued)

SANBS-BHF Codes	Nappi Codes	Descriptions	Price Excl. VAT	Price Incl. VAT
4425	4425	ACHE Test	R 144.33	R 165.98
4426	4426	HLA Typ. low res Class 1 DNA-PCR per loc	R 1,145.82	R 1,317.69
4427	4427	HLA low res. Class II PCR/DNA Locus DQB/DRB1	R 847.76	R 974.93
4428	4428	HLA Typing low res Class 1 or 2 DNA-PCR	R 756.08	R 869.49
4430	4430	HIV p24 antigen	R 281.94	R 324.23
4522	4522	Alpha Feto Protein(AFP): Amnio Fluid	R 142.28	R 163.62
4531	4531	HBsAG/Anti HCV	R 165.89	R 190.78
4601	4601	Panel typing antibody Class I 4601	R 412.43	R 474.30
4602	4602	Panel typing: Antibody det.: Class II	R 504.22	R 579.85
4603	4603	HLA Specific locus/antigen 4603	R 309.40	R 355.81
4604	4604	HLA Class I	R 595.70	R 685.06
4605	4605	HLA Class 2 typing Serology	R 595.70	R 685.06
4607	4607	Crossmatching T-cells 4607	R 206.27	R 237.21
4608	4608	Crossmatching B-cells 4608	R 435.43	R 500.75
4614	4614	Tissue Rapid HIV Screen	R 137.38	R 157.98
4750	4750	Cell Culture, blood/cord blood	R 176.01	R 202.41
4751	4751	Cell Culture, Products of conception/ Amniotic Fluid	R 528.04	R 607.24
4752	4752	Cell Cult. Chorionic Villus Sample	R 704.05	R 809.66
4754	4754	Karyotyping, Blood/Cord Blood	R 1,584.11	R 1,821.73
4755	4755	Karyotyping, amniotic Fluid/Chorionic villus sample/prod of conception	R 3,168.12	R 3,643.34
4757	4757	Additional analysis, Mosaicism/Staining Procedure	R 821.39	R 944.60
4763	4763	Blood DNA Extraction	R 528.04	R 607.24
4767	4767	Amniotic Fluid : DNA Extraction	R 1,055.93	R 1,214.32
4769	4769	Amniotic Fluid : Genotype : PCR	R 1,407.91	R 1,619.09
78003	78003	Additional Disposal Kit	R 4,641.25	R 5,337.44
78005	709026-001	Chronic Wound Treatment Kit	R 1,695.54	R 1,949.87
78006	709025-001	Topical Haemostatic Agent	R 2,018.96	R 2,321.80
78007	709027-001	Platelet Growth Factor Macular Hole Repair	R 1,683.26	R 1,935.75
78008	78008	Platelet Growth Factor Wound Treatment	R 747.29	R 859.39
78013	78013	Antibody identification QC	R 72.44	R 83.30
78014	78014	Aneuploidy Detection	R 1,858.72	R 2,137.53
78030	709290-001	Designated Serum Eye Drops	R 4,329.15	R 4,978.52
78041	78041	Compatibility Testing QC	R 226.09	R 260.00
78054	708799-001	Autologous Serum Eye Drops	R 4,329.15	R 4,978.52
78090	78090	Medical Examination & Consultation 18-0141	R 350.14	R 402.66

Pathology Services (continued)

SANBS-BHF Codes	Nappi Codes	Descriptions	Price Excl. VAT	Price Incl. VAT
78106	78106	Therapeutic Plasma Exchange	R 13,598.41	R 15,638.18
78129	78129	Theurapeutic Venesection	R 85.29	R 98.08
78204	78204	Red Cell Exchange	R 13,410.02	R 15,421.52
78211	78211	Thrombocytapherisis	R 13,003.90	R 14,954.49
78213	78213	Tissue Rapid HBsAg Screen	R 329.55	R 378.99
78214	78214	Tissue Rapid HIV Screen	R 329.55	R 378.99
78225	78225	Perinatal Post-Natal Mother	R 193.71	R 222.77
78230	78230	Human Platelet Antibody Screen	R 2,931.94	R 3,371.73
78231	78231	Bone Marrow Engraftment Monitoring	R 1,451.00	R 1,668.65
78416	78416	Theurapeutic Exchange (DALI)	R 14,581.78	R 16,769.05
78850	78850	Topical Haemostatic Agent Single Dose	R 403.78	R 464.34
78851	78851	Chronic Wound Treatment Kit Single Dose	R 339.12	R 389.98
78852	78852	Platelet growth factor macular Single Dg	R 336.66	R 387.16
78920	78920	Cord Blood Cryopreservation	R 10,647.37	R 12,244.47
78921	78921	Human Platelet AG genotyping	R 2,028.42	R 2,332.62
78922	78922	Rapid CMV Screen	R 201.10	R 231.27
78923	78923	Re-Infusion Of Cryo Preserve Stem Cells	R 810.17	R 931.70
78926	78926	Stem Cell Collection/Leucopherisis	R 16,789.91	R 19,308.40
78940	78940	CD 34 Testing	R 483.49	R 556.02
78928	78928	Stem Cell Cryopreservation	R 11,480.60	R 13,202.69

Miscellaneous

SANBS-BHF Codes	Nappi Codes	Descriptions	Price Excl. VAT	Price Incl. VAT
10300		Albusol 4% 200 ml	R 398.70	R 458.51
10310		Albusol 20% 100 ml	R 668.61	R 768.90
10311		Albusol 20% 50 ml	R 334.30	R 384.45
600		Emergency Blood Fridge	R 565.35	R 650.15
78100		Paternity Investigation - 1 Client	R 1,567.04	R 1,802.10
78950		Paternity Investigation - 3 Client	R 4,701.22	R 5,406.41
78535		Blood Pack For therapeutic Venesection	R 268.99	R 309.34
78203		Blood Pack With Anticoagulant	R 118.13	R 135.85
78206	410993-018	Blood Pack, No Anticoagulant	R 169.06	R 194.42

Board of Directors:

Executives:

• J Louw (CEO) • J Thomson (Medical Director)

Company Secretary:

• M Luthuli

Non-Executives:

• G Simelane (Chairman) • R Brand • F Burn • W Gumede • P Knox • V Moodley • P Mthethwa • A Ramalho • R Theunissen

The SANBS reserves the right to change prices at any time. For any queries please contact us on the following:

Toll-free number: 0800 11 9031, **Email:** customerservice@sanbs.org.za, **Website:** www.sanbs.org.za