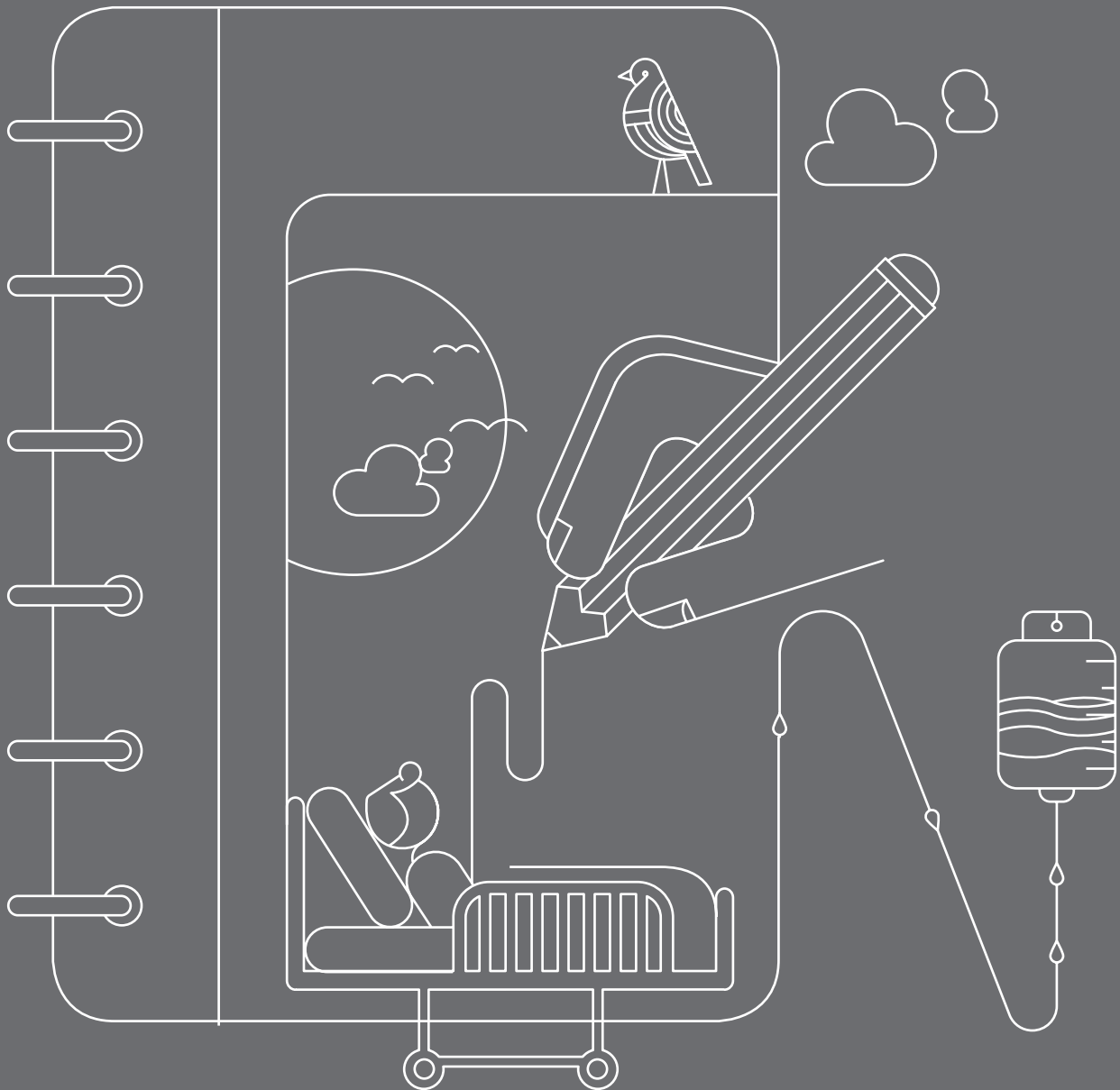




Private Patients Pricelist

1 January 2020 – 31 December 2020



Blood and Platelet Productions

Red Cells

SANBS-BHF Codes	Nappi Codes	Descriptions	Price Excl. VAT	Price Incl. VAT
78040	708800-001	Red Cell Concentrate	R 2 228,06	R 2 562,26
78051	708802-001	Red Cell Conc. Leucocyte Depleted	R 3 640,64	R 4 186,74
78043	708803-001	Red Cell Conc. Paed. Leucodepleted	R 2 059,99	R 2 368,98

Platelets

SANBS-BHF Codes	Nappi Codes	Descriptions	Price Excl. VAT	Price Incl. VAT
78124	708804-001	Platelet Conc. Single Donor Apherisis	R 11 642,32	R 13 388,66
78125	708805-001	Platelet Conc. Leucocyte Depleted, Pooled	R 10 382,45	R 11 939,81
78127	708808-001	Platelet Concentrate (Paediatric)	R 2 833,04	R 3 258,00
78122	708806-001	Platelet Concentrate Pooled	R 9 387,32	R 10 795,42

Whole Blood

SANBS-BHF Codes	Nappi Codes	Descriptions	Price Excl. VAT	Price Incl. VAT
78001	708807-001	Whole Blood	R 2 467,56	R 2 837,69
78059	708809-001	Whole Blood Leucocyte Depleted	R 3 880,03	R 4 462,04
78011	708810-001	Whole Blood Paediatric	R 2 059,99	R 2 368,99

Plasma

SANBS-BHF Codes	Nappi Codes	Descriptions	Price Excl. VAT	Price Incl. VAT
78103	708811-001	Cryoprecipitate (Fibrinogen Rich)	R 1 259,34	R 1 448,24
78174	708812-001	Frozen Plasma - Cryo Poor Donor Retested	R 1 438,15	R 1 653,87
78179	716662-001	Fresh Frozen Plasma - Donor Retested (Paediatric)	R 889,01	R 1 022,36
78176	708813-001	Fresh Frozen Plasma - Donor Retested	R 1 730,64	R 1 990,23

Blood and Administration Sets

SANBS-BHF Codes	Nappi Codes	Descriptions	Price Excl. VAT	Price Incl. VAT
78199	440415-002	Blood Filters: 1 Unit	R 1 047,96	R 1 205,16
78200	406059-001	Blood Filters: 2 Units	R 2 009,15	R 2 310,52
78197	628761-001	Platelet Filter 3 - 6 Unit PL2VAE	R 1 939,95	R 2 230,94
78004		Whole Blood - Reagent	R 963,06	R 1 107,52
78012		Buffy Coats	R 481,54	R 553,77
78201	470471-001	Set, Blood and Plasma Recipient Set	R 40,48	R 46,55
78202	470474-001	Set, Platelet Recipient	R 105,38	R 121,19
78609		Cryopreservation Bag	R 976,63	R 1 123,13

Blood and Platelet Productions (continued)

Additional Services and Surcharges

SANBS-BHF Codes	Descriptions	Price Excl. VAT	Price Incl. VAT
78050	Irradiation Fee	R 464,08	R 533,69
10210	Transfusion Crossmatch	R 991,43	R 1 140,15
10333	Type and Screen	R 430,99	R 495,64
78400	Routine Collection Fee	R 196,27	R 225,71
78401	Routine Delivery Fee	R 196,26	R 225,70
78402	Emergency Round Trip	R 1 335,77	R 1 536,13
78403	Emergency One Way Fee	R 935,05	R 1 075,30
78989	Telephone Consultation 18-0130	R 275,81	R 317,18
78177	FFP Autologous/Directed Fee	R 195,49	R 224,81
78049	Directed Donation	R 238,65	R 274,45
78406	After Hours	R 500,93	R 576,07
78408	Autologous/Directed WB	R 246,77	R 283,78
78407	Autologous/Directed RCC	R 222,77	R 256,19
78409	Blood Return Basis	R 198,49	R 228,26
78410	Emergency Cross-Match	R 151,15	R 173,82
78412	HLA Match	R 1 455,36	R 1 673,66
78413	Rare Donation	R 1 710,46	R 1 967,03
78415	Washed RCC/WB	R 1 425,34	R 1 639,14
78414	Offsite Charge	R 2 008,59	R 2 309,88
78417	Emergency Blood Surcharge	R 222,80	R 256,22

Pathology Services

SANBS-BHF Codes	Nappi Codes	Descriptions	Price Excl. VAT	Price Incl. VAT
3709	3709	Antibody Screen/Antiglobulin Test(DAT & IAT)	R 41,70	R 47,96
3710	3710	Antibody Titration	R 82,49	R 94,86
3712	3712	Antibody Identification	R 96,80	R 111,32
3729	3729	Cold Agglutinins	R 41,19	R 47,37
3739	3739	Erythrocyte Count	R 25,76	R 29,63
3762	3762	Haemoglobin	R 20,54	R 23,62
3764	3764	Grouping: A B O Antigen	R 41,19	R 47,37
3765	3765	Grouping: Rh Antigen	R 41,19	R 47,37
3785	3785	Leucocyte Count	R 20,54	R 23,62
3791	3791	Haematocrit	R 20,54	R 23,62
3816	3816	T and B Cells EAC Markers	R 241,74	R 278,00
3834	3834	Red Cell Rh Phenotype	R 113,46	R 130,48
3932	3932	Anti - HIV	R 161,50	R 185,73
3953	3953	Haemolysin/ Test tube Agglutination	R 47,63	R 54,78
4117	4117	Protein: Total	R 35,67	R 41,02
4172	4172	HIV p24 antigen (Elisa Test)	R 142,29	R 163,63

SANBS reserves the right to change prices at any time.

Pathology Services (continued)

SANBS-BHF Codes	Nappi Codes	Descriptions	Price Excl. VAT	Price Incl. VAT
4425	4425	ACHE Test	R 144,33	R 165,98
4426	4426	HLA Typ. low res Class 1 DNA-PCR per loc	R 1 145,82	R 1 317,69
4427	4427	HLA low res.Class II PCR/DNA Locus DQB/DRB1	R 847,76	R 974,92
4428	4428	HLA Typing low res Class 1 or 2 DNA-PCR	R 756,08	R 869,49
4430	4430	HIV p24 Antigen	R 281,94	R 324,23
4522	4522	Alpha Feto Protein(AFP): Amnio Fluid	R 142,29	R 163,63
4531	4531	HBsAG/Anti HCV	R 165,90	R 190,78
4601	4601	Panel Typing Antibody Class I 4601	R 412,44	R 474,30
4602	4602	Panel Typing: Antibody det.: Class II	R 504,22	R 579,86
4603	4603	HLA Specific Locus/Antigen 4603	R 309,41	R 355,82
4604	4604	HLA Class I	R 595,71	R 685,06
4605	4605	HLA Class 2 Typing Serology	R 595,71	R 685,06
4607	4607	Crossmatching T-cells 4607	R 206,27	R 237,21
4608	4608	Crossmatching B-cells 4608	R 435,43	R 500,74
4614	4614	Tissue Rapid HIV Screen	R 137,37	R 157,98
4750	4750	Cell Culture, Blood/Cord Blood	R 176,01	R 202,41
4751	4751	Cell Culture, Products of Conception/ Amniotic Fluid	R 528,04	R 607,25
4752	4752	Cell Cult. Chorionic Villus Sample	R 704,05	R 809,66
4754	4754	Karyotyping, Blood/Cord Blood	R 1 584,11	R 1 821,72
4755	4755	Karyotyping, Amniotic Fluid/Chorionic Villus Sample/Prod of Conception	R 3 168,12	R 3 643,34
4757	4757	Additional Analysis, Mosaicism/Staining Procedure	R 821,39	R 944,60
4763	4763	Blood DNA Extraction	R 528,04	R 607,25
4767	4767	Prenatal Diagnosis: Amniotic Fluid or Chorionic Tissue: DNA Extraction	R1 060,98	R 1 220,13
4769	4769	Prenatal Diagnosis: Amniotic Fluid or Chorionic Tissue: Genotype Per Person: PCR	R1 414,64	R 1 626,84
78003	78003	Additional Disposal Kit	R 4 641,25	R 5 337,44
78005	709026-001	Chronic Wound Treatment Kit	R 1 695,54	R 1 949,87
78006	709025-001	Topical Haemostatic Agent	R 2 018,96	R 2 321,80
78007	709027-001	Platelet Growth Factor Macular Hole Repair	R 1 683,26	R 1 935,75
78008	78008	Platelet Growth Factor Wound Treatment	R 747,29	R 859,39
78013	78013	Antibody Identification QC	R 72,44	R 83,30
78014	78014	Aneuploidy Detection	R 1 858,72	R 2 137,53
78030	709290-001	Designated Serum Eye Drops	R 4 329,15	R 4 978,52
78041	78041	Compatibility Testing QC	R 226,09	R 260,00
78054	708799-001	Autologous Serum Eye Drops	R 7 774,35	R 8 940,50
78090	78090	Medical Examination & Consultation 18-0141	R 500,00	R 575,00
78106	78106	Therapeutic Plasma Exchange	R 14 928,27	R 17 167,52

Pathology Services (continued)

SANBS-BHF Codes	Nappi Codes	Descriptions	Price Excl. VAT	Price Incl. VAT
78129	78129	Theurapeutic Venesection	R 85,29	R 98,08
78204	78204	Red Cell Exchange	R 14 243,64	R 16 380,19
78211	78211	Thrombocytapheresis	R 13 258,68	R 15 247,48
78213	78213	Tissue Rapid HBsAg Screen	R 329,55	R 378,99
78214	78214	Tissue Rapid HIV Screen	R 329,55	R 378,99
78225	78225	Perinatal Post-Natal Mother	R 193,71	R 222,77
78230	78230	Human Platelet Antibody Screen	R 2 931,94	R 3 371,73
78231	78231	Bone Marrow Engraftment Monitoring	R 1 451,00	R 1 668,65
78416	78416	Theurapeutic Exchange (DALI)	R 14 581,78	R 16 769,05
78850	78850	Topical Haemostatic Agent Single Dose	R 403,78	R 464,34
78851	78851	Chronic Wound Treatment Kit Single Dose	R 339,12	R 389,98
78852	78852	Platelet Growth Factor Macular Single Dg	R 336,66	R 387,16
78920	78920	Cord Blood Cryopreservation	R 10 647,37	R 12 244,47
78921	78921	Human Platelet AG Genotyping	R 2 028,42	R 2 332,68
78922	78922	Rapid CMV Screen	R 201,10	R 231,27
78923	78923	Re-Infusion of Cryo Preserve Stem Cells	R 5 795,03	R 6 664,29
78926	78926	Stem Cell Collection/Leucopheresis	R 18 993,64	R 21 842,69
78940	78940	CD 34 Testing	R 483,49	R 556,02
78928	78928	Stem Cell Cryopreservation	R 16 271,35	R 18 712,05
78550		HLA Class 1 and 2 Anitbody Screen	R 3 021,88	R 3 475,16
78551		HLA Single Antigen Class 1	R 2 840,14	R 3 266,16
78552		HLA Single Antigen Class 2	R 2 123,12	R 2 441,59
		Annual Cryopreserved Stem Cell Storage Fee (after 2 years of storage)	R 5 161,25	R 5 935,43
		Donor Lymphocyte Infusion	R 3 497,02	R 4 021,57
		Autologous Platelet Rich Plasma	R 11 380,84	R 13 087,97

Miscellaneous

SANBS-BHF Codes	Nappi Codes	Descriptions	Price Excl. VAT	Price Incl. VAT
10300		Albusol 4% 200 ml	R 451,11	R 518,77
10310		Albusol 20% 100 ml	R 756,51	R 869,99
10311		Albusol 20% 50 ml	R 378,25	R 434,99
600		Emergency Blood Fridge	R 565,35	R 650,15
78535		Blood Pack for Therapeutic Venesection	R 268,99	R 309,34
78203		Blood Pack With Anticoagulant	R 118,13	R 135,85
78206	410993-018	Blood Pack, No Anticoagulant	R 161,78	R 186,05

Board of Directors:

Executives:

• J Louw (CEO) • J Thomson (Medical Director)

Company Secretary:

• M Luthuli

Non-Executives:

• G Simelane (Chairman) • R Brand • F Burn • W Gumede • P Knox • V Moodley • P Mthethwa • A Ramalho • R Theunissen

The SANBS reserves the right to change prices at any time. For any queries please contact us on the following:

Toll-free number: 0800 11 9031, **Email:** customerservice@sanbs.org.za, **Website:** www.sanbs.org.za